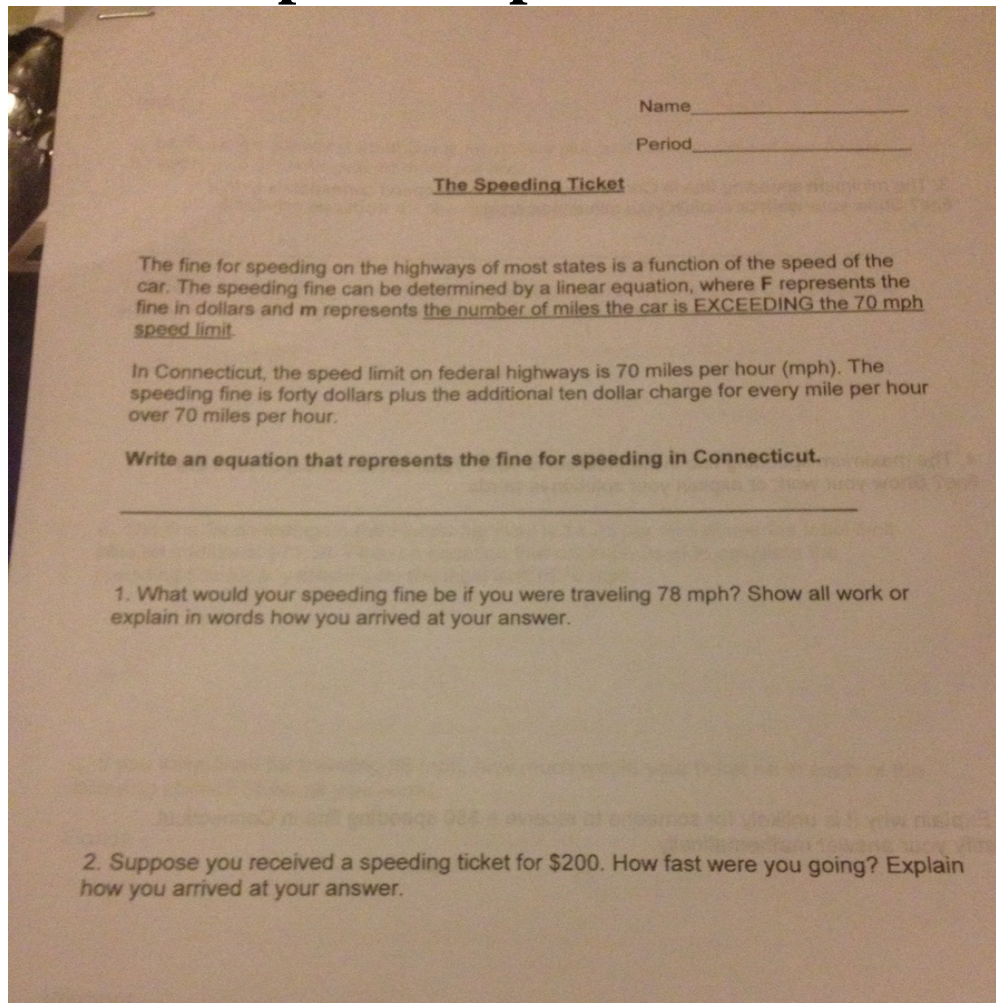


# Please help and explain how to do it



## Answer 1

Answer: so  $F(m)$  because  $F$  dollars for every mph over the speed limit  
so 40 dollar speeding fine so +40  
10 dollars for every mile over and  $m$ =miles over so put them all together and get  
 $F(m)=10m+40$

1.

so if you were going 78 mph

to find the mph over you would do  $78-70=8$ mph over so put in 8 for m and get

$F(8)=10(8)+40=80+40=\$120$  fine for going at 78 mph

[MATHEMATICS](#) [HIGH SCHOOL](#)

1. [Home](#)
2. [please-help-and-explain-how-to-do-it](#)