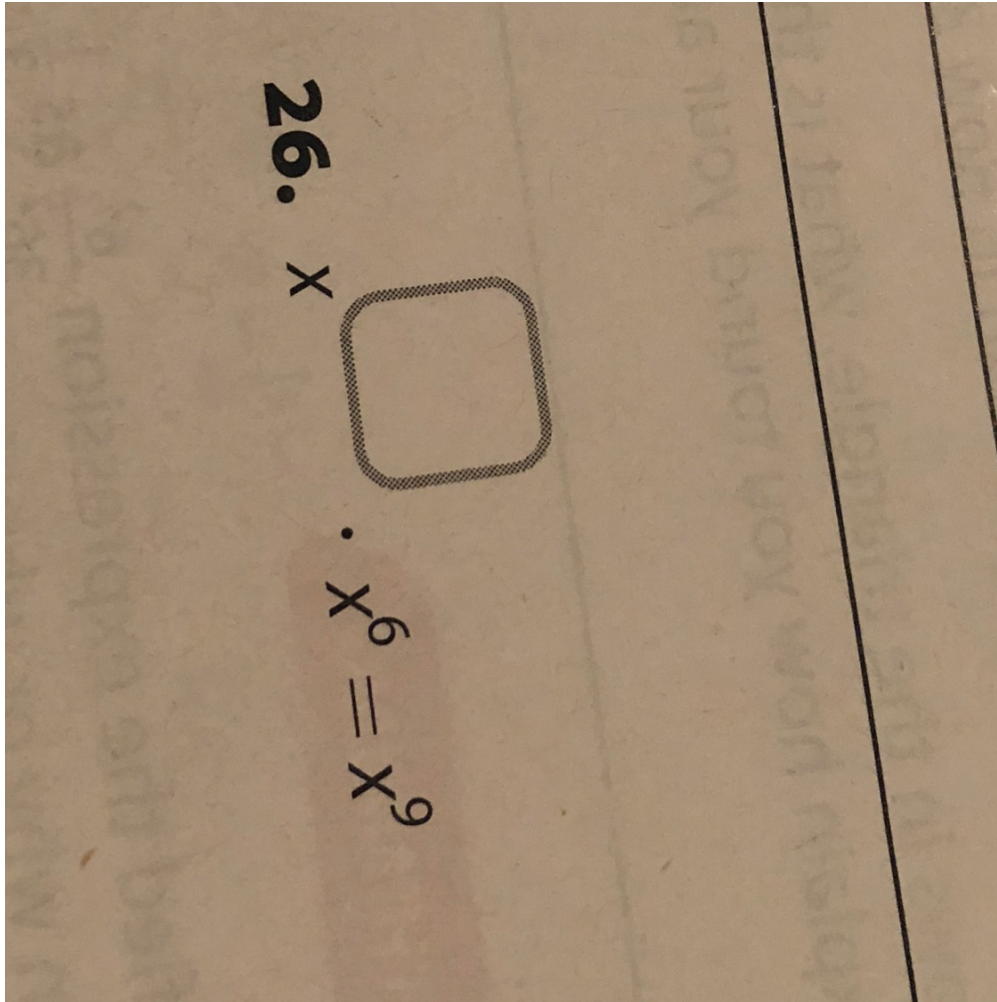


Hi my math teacher makes my life impossible and I have no clue how to do this thanks!



Answer 1

Answer: the answer is x^3 (when you have product of powers you just add them.).

Answer 2

Answer:

Answer:

x^3 , because when you have the powers (in x^6 , the "6" is the power) then you add the powers. $x^3 + x^6 = x^9$. So your answer is x^3 .

Step-by-step explanation:

[MATHEMATICS](#) [MIDDLE SCHOOL](#)

1. [Home](#)
2. [hi-my-math-teacher-makes-my-life-impossible-and-i-have-no-clue-how-to-do-this-thanks](#)